

MUNI
CZS

EMERGENCY & SAFETY workshop

Orientation Week
Centre for International Cooperation

Emergency – General Comments

- Emergency responses from various bodies in the Czech Republic
 - Czech state police vs. municipal police (Brno Municipal Police) (Policie)
 - Firefighters (Hasiči)
 - Emergency Medical Service (Ambulance)

Emergency Numbers – call 122

- police, fire, medical and rescue service
- it facilitates emergency **calls for foreigners and it is possible to use in wide scale of emergencies**
- this number is used in case of the need for urgent Police, Firefighters or Emergency Medical Service intervention
- the operators speak Czech, English and German
- this call is **free of charge** (from any type of telephone and from any place in the Czech Republic)
- the line is equipped with "Caller ID technology". It is also possible to **locate the mobile phone** caller with an accuracy of 200 meters, so operators knows where are you



POLICIE

Octavia

POMÁHAT A CHRÁNIT

POLICIE

C168





213

ÚZEMNÍ STŘEDISKO ZÁCHRANNÉ SLUŽBY
STŘEDOČESKÉHO KRAJE



☎ 155 ZÁCHRANNÁ SLUŽBA

6S3 1212

Local (Czech Republic) emergency numbers

- **150** Firefighters
- **155** Emergency Medical Service
- **156** Municipal / local police
- **158** Czech Police

Local (Czech Republic) emergency numbers

- **150** Firefighters
 - **155** Emergency Medical Service
 - **156** Municipal / local police
 - **158** Czech Police
- the operators speak Czech
- this call is free of charge (from any type of telephone and from any place in the Czech Republic)

- **in case of emergency in MU premises:**

- local place reception/porter's lodge
- NO CAMPUS/UNIVERSITY POLICE STAFF

112



Secure Safety, Health Protection and Fire Prevention

- each building has its own health protection and fire preventions rules
 - fire-fighting regulations, fire alarm regulations on the site
 - evacuation plans and maps on the walls/ back side of the room doors
 - check the evacuation paths/emergency exits in the area
- during teaching student should not be under the influence of alcohol and drugs, even outside faculty's premises
- **smoking is prohibited** in all MU buildings and other school facilities (except for the designated areas)
- first aid kit (usually at the receptions/porter's lodge)
- in case of an any **accident/injury** inform responsible person (teacher/receptionist, IRO)

FIRE ALARM GUIDELINES

Organisation: [Masaryk University, Accommodation and Catering Services](#)

Address: [Vinařská 5, 603 00 Brno](#)

1. PURPOSE

These fire alarm guidelines define the obligations of employees and persons provided with accommodation in the case that a fire breaks out, and aim to ensure the performance of rapid and effective intervention in the case of a fire, natural disaster or other emergency.

2. THE OBLIGATION OF RAISING THE ALARM

All persons are obliged to raise the alarm without delay if they detect a fire, or to report it to the fire office.

In the case of a fire, telephone the South Moravian Regional Fire Brigade – telephone **150**

Report: [who is calling, where the fire is, what is on fire](#)

3. ASSISTANCE IN FIGHTING A FIRE

In the case of a fire breaking out, all persons are obliged to take the necessary measures to protect endangered people, to put out the fire if possible, or to take the necessary measures to restrict its spreading. All persons are obliged to provide personal assistance to the fire brigade at the request of its commander.

4. THE METHOD OF RAISING THE ALARM

The fire alarm is raised: [by siren, by radio with instructions for evacuation](#)

5. ACTION TO BE TAKEN AFTER THE ALARM IS RAISED

Action to be taken by the head of the section threatened by fire: [supervise fire-fighting and evacuation work until the fire brigade arrives, turn off the electricity.](#)

Action to be taken by staff on reception: [report the fire, rescue endangered persons, fight the fire.](#)

Action to be taken by other persons: [do not leave premises that are not directly threatened by the fire, obey instructions given by persons supervising evacuation and fire-fighting.](#)

6. IMPORTANT TELEPHONE NUMBERS

| | |
|----------------------|-------------|
| Fire brigade | 150 |
| Police | 158 |
| Ambulance | 155 |
| Electrical faults | 800 225 577 |
| Gas faults | 1239 |
| Water | 543 212 537 |
| Head of organisation | 549 492 701 |
| Emergency calls | 112 |

Brno, 16 February 2007

Drawn up by: Jiří Kocman

Vladimír Páček

ing. Zdeněk Čížek, in his own hand

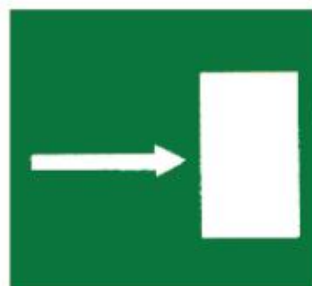
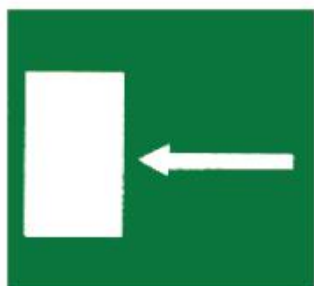
Director of MU Accommodation and Catering Services



Únikový východ (vlevo)

Únikový východ (vpravo)

Únikový východ (dolů)



Nouzový východ / úniková cesta



Nouzový východ / úniková cesta



Secure Safety, Health Protection and Fire Prevention II

- **safety and fire instruction** available at each dorms for consultation
- if evacuation plan is on the **inner side of the room door** - do not cover it/remove it/inform reception it is not there (including the graphic sheet)
- **find the closest exit and fire extinguisher** (room or corridor) after you check-in, use the emergency exits, follow the emergency path in case of fire
- find out how the **fire measurements** work at the given hall (fire alarms, loud speakers)
- **do not use elevators** in case of fire
- in case of evacuation is not possible stay in a safe place (balcony)

FIRE EVACUATION PLAN

for the buildings: University Halls of Residence, Vlnářská 5-blocks A1, A2, A3
Masaryk University, Accommodation and Catering Services, Vlnářská 5, Brno

This fire evacuation plan has been drawn up in accordance with Ministry of the Interior decree 246/2001 Sb. on fire prevention.

In drawing up this fire evacuation plan, due consideration has been given to the specific conditions in force in the building and to the use of the university halls of residence and the maximum number of persons that may be in the building.

a) Employees coordinating the evacuation:

halls manager or deputy

halls receptionist

Outside working hours:

halls receptionist

Place from which the evacuation is to be coordinated:

any evacuation will be announced and coordinated from reception in the building

b) Employees providing assistance during an evacuation:

halls maintenance

storekeeper

and other employees according to instructions from the head of halls

c) Evacuation routes and method of evacuation:

people will be evacuated along the internal communications in the building (corridors, staircases I and II) in the direction of the main exit from the building onto the open space in front of the halls of residence, and towards the emergency exits onto the open space between the individual halls blocks. Area on which evacuated persons are to assemble – the space between the individual blocks.

The direction of escape routes is indicated by fire signs (arrows pointing in the direction of escape) and the fire evacuation plan on individual floors.

d) Employees checking the number of persons evacuated:

Employees supervising the evacuation will perform a thorough control of the number of persons evacuated, and will acquaint the head of the emergency unit with the facts determined.

e) The provision of first aid:

the provision of first aid to injured persons will be performed by the halls receptionist using a first-aid kit. A doctor will be called should there be more serious injuries.

f) The place at which material is to be assembled and the way in which it is to be guarded:

material removed from the building will be assembled in front of the halls of residence. Employees supervising the evacuation will guard the material removed from the building.

THE USE OF ELEVATORS IS FORBIDDEN DURING EVACUATION!!!

Drawn up by: Jiří Kocman
authorised expert
Vladimír Páček
MU ACS technician

Approved by: ing. Zdeněk Čížek, in his own hand
Director of MU ACS

Emergency & Safety Criteria of MU halls

| | Vinařská A1 | Vinařská A2 | Komárov Sladkého | Kounicova |
|-------------------------------------------|-----------------------|-----------------------|-----------------------|-----------------------|
| Fire extinguishers | YES (placed in rooms) | YES (placed in rooms) | YES (placed in rooms) | YES (placed in rooms) |
| Central sirens (fire announcement) | YES | YES | NO | NO |
| Out loud broadcasting systém | YES | YES | YES | YES |
| Smoke detectors | YES | NO | NO | NO |
| 24/7 service | YES | YES | YES | YES |
| Emergency instructions in English | YES | YES | YES | YES |

Fire extinguisher

- in the rooms or in the corridors
- different types, the most common is **dry-powder extinguisher** that is used universally for all types of fire

How to operate the fire extinguisher

- take it away from the wall holder; [VIDEO](#)
- pull the security pin from the top handle of the extinguisher
- hold the end of the hose firmly and point it to the fire source (not to the flames) from app. one meter distance (app. 15 seconds usage)

Exchange students were destroying MU facilities at 2 am

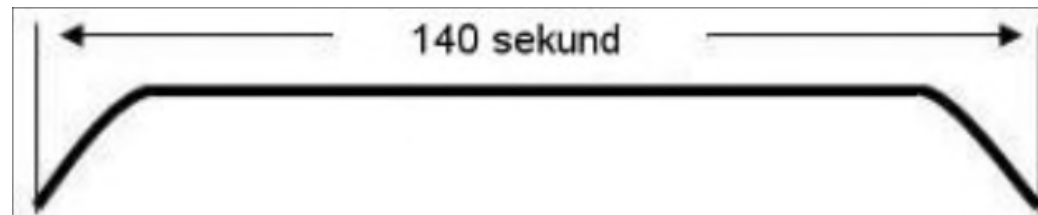
- police investigation
- accused of a criminal offence
- case at the court
- home university was informed
- student was sent home immediately in the middle of the semester with no grades and fine to pay

Safety - summary

- make sure you know the **evacuation/emergency rules** of the places you go
- make sure you adhere to the work safety rules (labs, computer labs, etc.)
- do not violate legal rules in the Czech Republic
- be aware of the **pickpockets**
- be aware of the **Closed Circuit Television Camera** (CCTV at public places and in halls)

Sirens signals

- "Siren test" signal is an uninterrupted tone of 140 seconds' duration (every first Wednesday in each month at 12:00 at midday)



<http://varujemevas.cz/zkouska-siren/>

Sirens: General Warning

- this signal announces that there is a danger and may sound at any time during the day and night. "It is a warble tone of 140 seconds' duration and it may sound 3 times in a row.



<http://varujemevas.cz/vseobecna-vystraha/>

Health stuff in Brno

- your travel health insurance plan
 - defines the benefits and coverage you have (payments at doctors)
 - take it with you when seeing doctor
- your health and safety rules may differ from what you get used to follow back home

NON URGENT MEDICAL AID

- link at CZS web pages - International Student Guide (and Survival Guide) from yesterday www.czs.muni.cz/studentguide
- **NO CAMPUS HEALTH CENTRE**
- nonstop medical services in Emergency Hospital (injuries and emergency dental care)
 - Mon – Fri: 17:00 – 7:00
 - Weekends: nonstop

NON URGENT MEDICAL AID

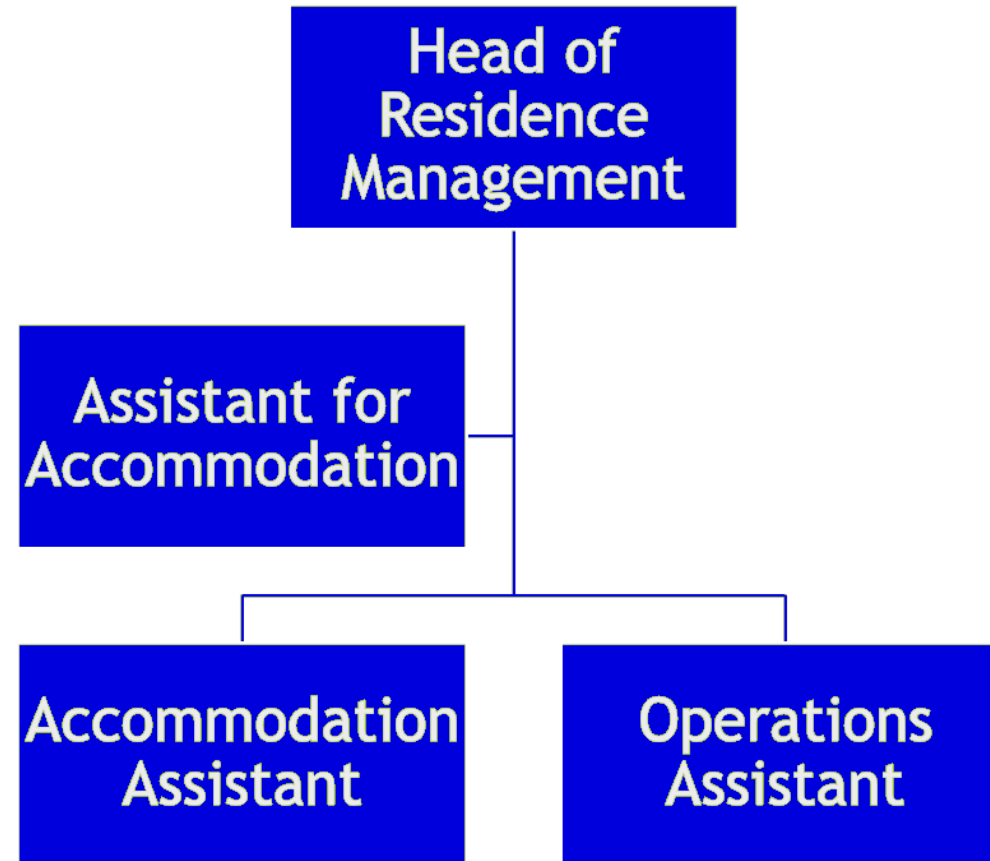
- **AED stations (automated external defibrillator):** MU rector's office building, Bohunice Campus, Brno City center - main station, Vankovka, Freedom Square, Spilberk Castle
- **emergency (nonstop) Pharmacy**
 - Koliště 47 (nonstop) , Main station (nonstop)

NON URGENT MEDICAL AID

- **doctors who speak English** (working days morning + afternoons)
 - General Practitioner
 - Dermatologist
 - Dentist
 - Gynecologist
 - Psychological/Psychiatric Counselling
- **within MU Departments of Psychology. Clinical psychologist and emergency psychology help**

Masaryk University CZS Hot numbers

- Centre for International Cooperation hot numbers
(questions/assistance out of office hours)
 - +420 777 128 339 (Martin)
 - +420 777 128 496 (Lucie)
- Safety and emergency test - everyone has to go through



Each dormitory has:

Receptionists

1 Accomodation Assistant

1 Operations Assistant

- It is possible to solve problems and answer questions directly at the dorms with these, or by contacting whom?

Who to contact when?

- **Receptionist:** Basic things, borrowing things, something breaks or stops working in your room, ...
- **Accommodation Assistant:** if you want to move or change your contract
- **Operations Assistant:** if you have a problem with how something around the dorm works, but it is better to contact me about that
- **???:** If you are unsure of who to contact

Please be considerate to your neighbours!

- Czech law sets the so-called silent hours all around the country, including the dorms to 22:00–6:00 (10 PM–6AM)
- Please respect this rule to its full extent.

Become a student representative!

M U N I

C Z S